

19 Rosemount Avenue  
Rosemount Point  
West Byfleet  
KT14 6BD





19 Rosemount Avenue  
£300,000

Local Authority

Council Tax Band

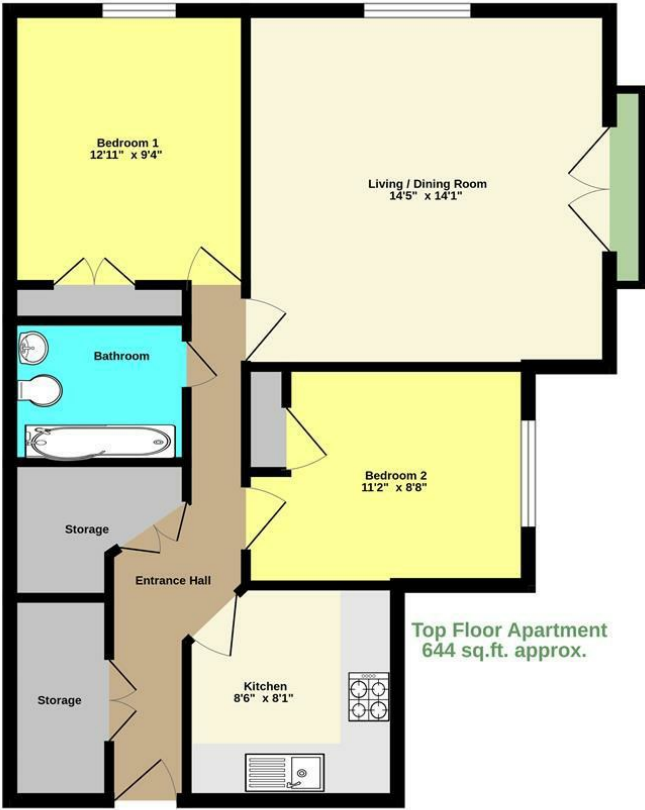
D

Directions

Energy Efficiency Rating		
	Current	Potential
Very energy efficient - lower running costs		
(92 plus) A		
(81-91) B		
(69-80) C		
(55-68) D		
(49-54) E		
(21-38) F		
(1-20) G		
Not energy efficient - higher running costs		
England & Wales		EU Directive 2002/91/EC



Agents Note: Whilst every care has been taken to prepare these particulars, they are for guidance purposes only. All measurements are approximate and are for general guidance purposes only and whilst every care has been taken to ensure their accuracy, they should not be relied upon and potential buyers/tenants are advised to recheck the measurements



Top Floor Apartment  
644 sq.ft. approx.

Marketed By mint homes Ltd

TOTAL FLOOR AREA : 644 sq.ft. approx.

Marketed by mint homes Ltd. Whilst every attempt has been made to ensure the accuracy of the information contained here, measurements of doors, windows, rooms and any other items are approximate and no responsibility is taken by any error. Prepared by Simon Lee  
Made with Metropix 5.0.2024



### Mint Homes

14 Nicholas Gardens  
Pyrford  
Surrey  
GU22 8SD



### Contact

01932 336177  
[hello@minthomes.uk](mailto:hello@minthomes.uk)  
[minthomes.uk](http://minthomes.uk)

